

# DJI FlightHub

User Guide V1.0

2018.07



# Contents

Disclaimer and Warning	3
Product Profile	3
Introduction	3
DJI FlightHub Versions	3
Login	4
Preparing	4
Configuration	4
Activation	4
Usage	5
Overview	5
Team Management	6
Using the DJI Pilot App to Bind Your Device	7
Operations Management	7
After-Sales Information	9

# Disclaimer and Warning

Congratulations on purchasing your new DJI™ product. The information in this document affects your safety and your legal rights and responsibilities. Read this entire document carefully to ensure proper configuration before use. Failure to read and follow instructions and warnings in this document may result in serious injury to yourself or others, damage to your DJI product, or damage to other objects in the vicinity. This document and all other collateral documents are subject to change at the sole discretion of DJI.

Please read this statement and the terms of use in DJI FLIGHTHUB™ before using it. By using this product, you hereby signify that you have read this disclaimer and warning carefully and that you understand and agree to abide by the terms and conditions herein. You agree that you are solely responsible for your own conduct while using this product, and for any consequences thereof. You agree to use this product only for purposes that are proper and in accordance with all applicable laws, rules, and regulations, and all terms, precautions, practices, policies, and guidelines DJI has made and may make available.

DJI accepts no liability for damage, injury or any legal responsibility incurred directly or indirectly from the use of this product. The user shall observe safe and lawful practices including, but not limited to, those set forth in this document.

Notwithstanding the above, your statutory rights under applicable national legislation are not affected by this disclaimer.

DJI is a trademark of SZ DJI TECHNOLOGY CO., LTD. (abbreviated as "DJI") and its affiliated companies. Names of products, brands, etc., appearing in this document are trademarks or registered trademarks of their respective owner companies. This product and document are copyrighted by DJI with all rights reserved. No part of this product or document shall be reproduced in any form without prior written consent of or authorization from DJI.

## Product Profile

### Introduction

DJI FlightHub is a web-based UAV remote management software platform that provides users with real-time aircraft monitoring, flight data records, and team management. Please follow this guide carefully to get started on your new DJI FlightHub platform properly.

### DJI FlightHub Versions

**Basic:** Used by up to five drones simultaneously, providing access to aircraft status, team management, aircraft real-time location, and flight data, but excludes real-time live view.

**Advanced:** Used by up to ten drones simultaneously and includes all the functions of the Basic version and real-time live view.

**Enterprise:** Provides access to all the Advanced functions as well as a cloud and media library, which will be available soon. Please contact DJI for the maximum number of supported drones for Enterprise.

# Preparing

## Configuration

Please follow the instructions below to configure your settings:

Computer: PC or Mac.

Browser: IE10 or above, Chrome 55 or above, Safari 10.0 or above, Firefox latest version.

Mobile device: 7.85 inch CrystalSky or 7-inch Android tablet (V4.4 or above).

Network connection: We recommended using a built-in 4G card or mobile data hotspot for network connection.

Supported aircraft: Matrice 200 series, PHANTOM™ 4 series, INSPIRE™ 2 series and MAVIC™ Pro.

## Activation

Activation is required for first time use.

1. Obtain the DJI FlightHub SN in your email.
2. Visit [www.dji-flighthub.com](http://www.dji-flighthub.com) to input your DJI account, DJI FlightHub SN, and company name.

The image shows two side-by-side screenshots of the DJI FlightHub web interface. The left screenshot displays a confirmation message: "Email has been sent, please check your email and activate this application". The right screenshot shows the "Activate your Account" form, which includes three input fields: "Email" (with placeholder text "Please input your email"), "License No." (with placeholder text "Please input your license no."), and "Company" (with placeholder text "Please input your company"). Below these fields is a prominent blue "Activate" button.

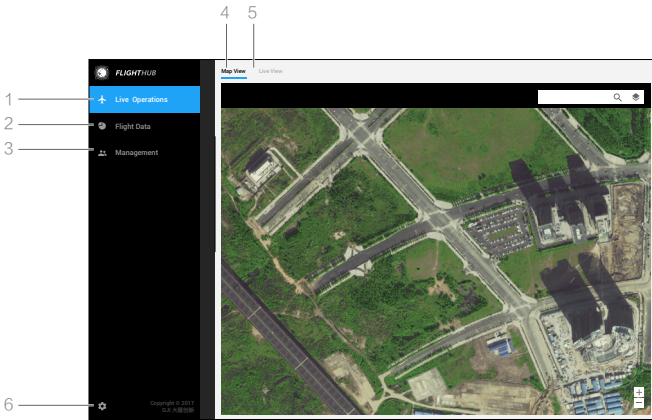
## Login

Visit [www.dji-flighthub.com](http://www.dji-flighthub.com) and login with your DJI account.

The image shows the DJI FlightHub login page. At the top is the DJI logo and the word "Login". Below this are three input fields: "Please enter your email address\*", "Password\*" (with a "Forgot password?" link), and "Verification code\*" (with a CAPTCHA image showing the characters "1EQP"). A blue "LOGIN" button is positioned below the verification code field. Underneath is the text "or login with:" followed by a dark blue button with the Facebook logo and the word "FACEBOOK". At the bottom, there is the text "New to DJI?" and a light blue button that says "CREATE MY DJI ACCOUNT".

# Usage

## Overview

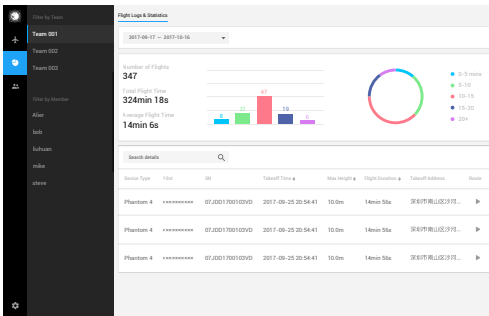


### 1. Live Operations

Real-time aircraft status is available on this page. Both map view and live view are supported.

### 2. Flight Data

View team or member flight logs regarding flight time, positioning, and tracking. A search function is also supported.



### 3. Team Management

Team management, team leader assignment, and pilot invitations are available. Admins can edit pilot information, change permissions, and delete pilots.

Note: One pilot can be added to several teams, but every team has one team leader only.

### 4. Map View

You can obtain real-time aircraft information on this page, with support for address searching.

### 5. Live View

Click to enter the live view. Up to four aircraft video feeds are supported at the same time.

## 6. Account

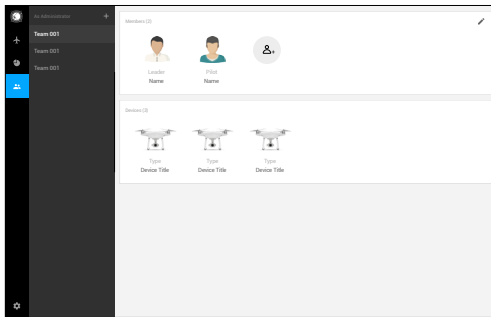
Your account information, language options, etc.

### Team Management

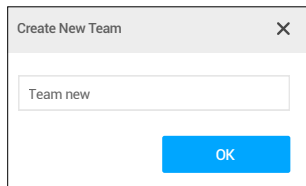
There are three levels of authority: Admin, Captain, and Pilot.

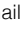
Admins are in charge of the DJI FlightHub account, and their authorization can't be changed. They can access the DJI FlightHub platform, check flight data, and invite new captains and pilots to join. Admins can add captains and have the power to change their authorization status. Captains have permission to access the DJI FlightHub platform and invite new pilots to join. There is only one Captain per team. Pilots have no authorization to access the FlightHub platform. Pilots can be in different teams simultaneously.

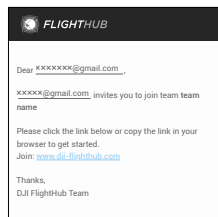
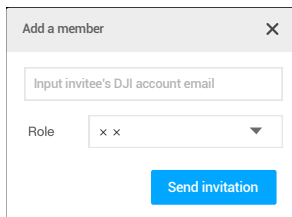
Admins can manage teams by following the steps below:



1. Login to DJI FlightHub and click "+" to create a new team.



2. Click  to input the email (should be registered as a DJI account) to invite pilots and assign captains. Both pilots and captains can be added to teams from their email addresses.



## Using the DJI Pilot App to Bind Your Device

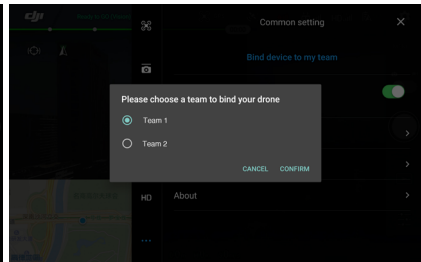
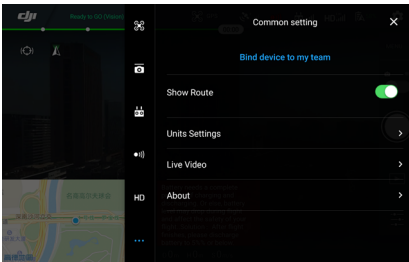
### Downloading and Installing DJI Pilot App

DJI FlightHub should be used with DJI Pilot App together. DJI Pilot App is currently compatible with Android system. It is recommended to use a DJI CrystalSky monitor built-in DJI Pilot App, or used a 7-inch Android tablet (V4.4 or above) to scan the QR code to download the DJI Pilot App.



### Binding Your Device

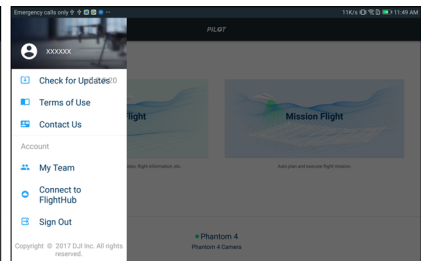
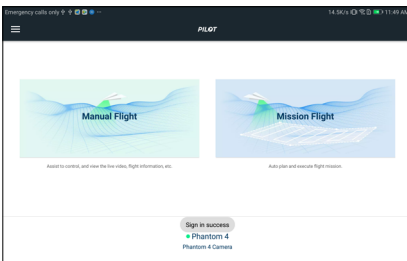
1. Login to the DJI Pilot app with your DJI account and enter camera view. Tap Settings->Common Settings to add the device to your team.
2. Select your team and the device will be added to the DJI FlightHub system.



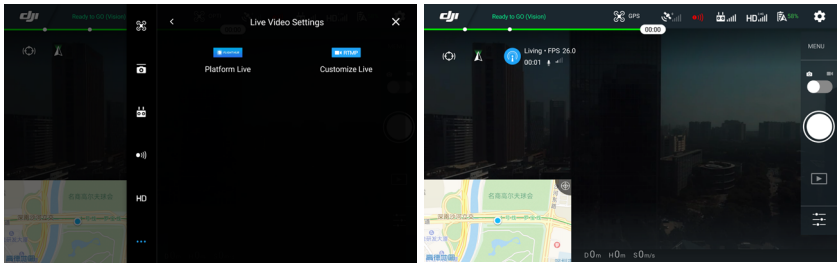
## Operations Management

### Enabling Live View in the DJI Pilot App

1. In the DJI Pilot app, tap the upper left corner to connect to DJI FlightHub. Flight data will be uploaded to DJI FlightHub automatically. Flight time and tracking will be automatically recorded. Live view and aircraft real-time location should be available if there is a network connection during flight. You can disable it when the task is complete (see below).



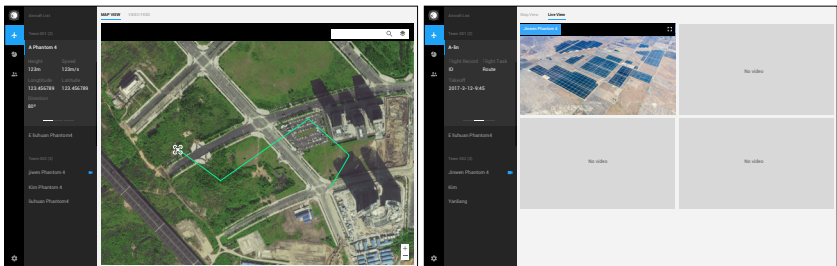
2. Pilots can view team information in the Pilot app. It will show that both team name and device are bound.
3. Tap Settings->Live Video Settings to enable the live view.



💡 The blue live view logo is for smooth signal transmission and red is for poor signal quality. You can set the lower live view bit rate to improve video fluency in case of poor signal quality.

### FlightHub Management

Admins can log into FlightHub to see aircraft real-time location in map view and videos in live view. Click the white box in the upper right corner of each video to play one of the videos in a new pop-up window.





# After-Sales Information

Visit the following pages to learn more about our After-sales Service Policy and warranty information:

1. After-sales Policy: <http://www.dji.com/service>
2. Refund Policy: <http://www.dji.com/service/refund-return>
3. Paid Repair Service: <http://www.dji.com/service/repair-service>
4. Warranty Service: <http://www.dji.com/service/warranty-service>

This content is subject to change.

Download the latest version from  
<http://www.dji.com/flighthub>

If you have any questions about this document, please contact DJI by sending a message to [DocSupport@dji.com](mailto:DocSupport@dji.com).

DJI FLIGHTHUB is a trademark of DJI.

Copyright © 2017 DJI All Rights Reserved.

